



C2M.v2.7.CCB

3.3.3.2 Determine Customer Deposit (Cash, Non-cash, 3rd party)

Creation Date: July 26, 2017

Last Updated: February 11, 2020

ORACLE®

Copyright © 2019, Oracle. All rights reserved.

This document is provided for information purposes only and the contents hereof are subject to change without notice.

This document is not warranted to be error-free, nor subject to any other warranties or conditions, whether expressed orally or implied in law, including implied warranties and conditions of merchantability or fitness for a particular purpose. We specifically disclaim any liability with respect to this document and no contractual obligations are formed either directly or indirectly by this document. This document may not be reproduced or transmitted in any form or by any means, electronic or mechanical, for any purpose, without our prior written permission. Oracle, JD Edwards, PeopleSoft, and Siebel are registered trademarks of Oracle Corporation and/or its affiliates. Other names may be trademarks of their respective owners.

Contents

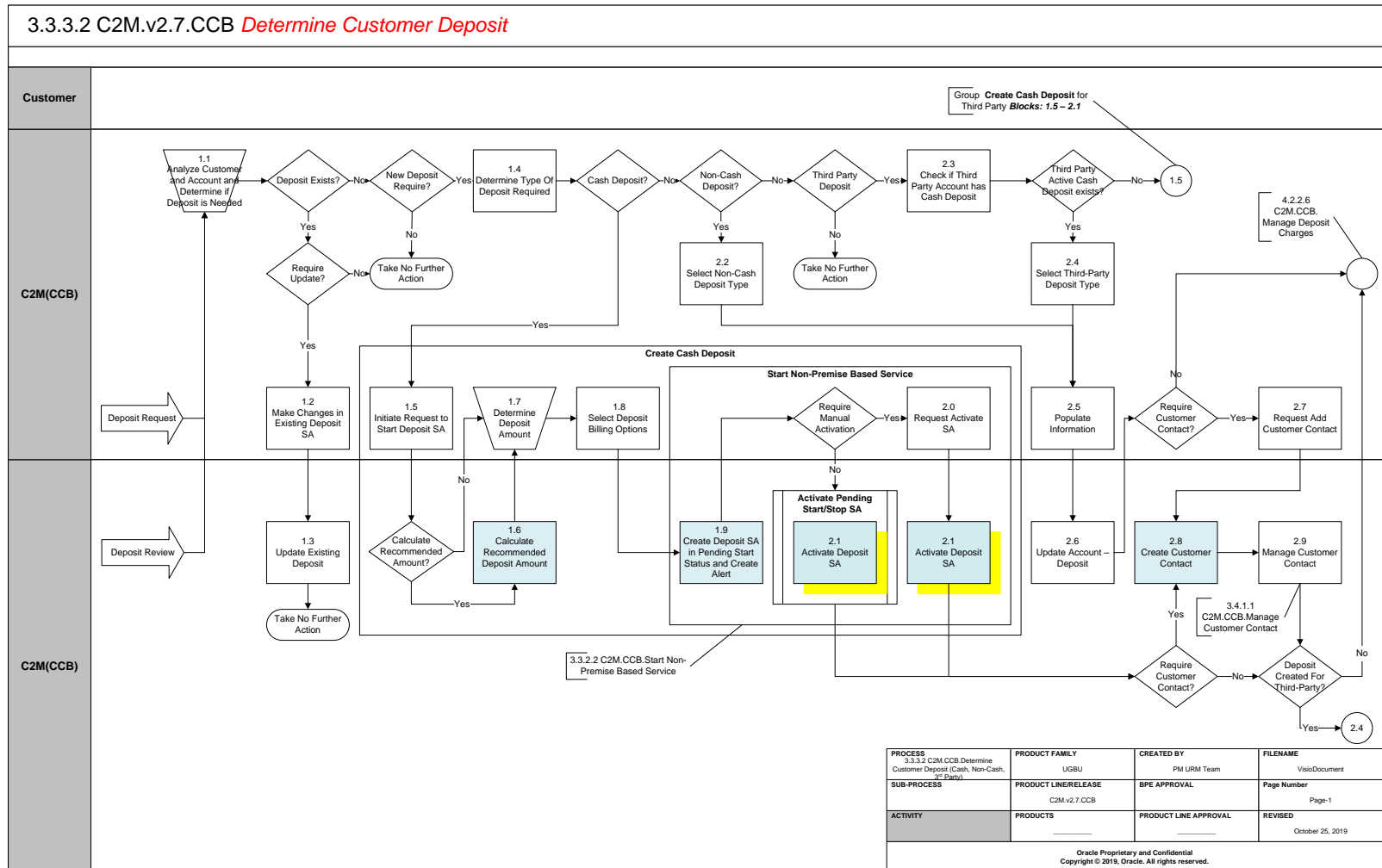
BRIEF DESCRIPTION	4
BUSINESS PROCESS MODEL	5
DETAIL BUSINESS PROCESS MODEL DESCRIPTION.....	6
TEST DOCUMENTATION RELATED TO THE CURRENT PROCESS	12
DOCUMENT CONTROL	13
ATTACHMENTS:.....	14
<i>Start/Stop Page</i>	14
<i>Account-Deposit Page</i>	14
<i>Deposit SA page</i>	14
<i>Customer Contact page</i>	Error! Bookmark not defined.
<i>Algorithms to Configure</i>	14
<i>Entities to Configure:</i>	14

Brief Description

Business Process: 3.3.3.2 C2M.CCB.Determine Customer Deposit
Process Type: Process
Parent Process: 3.3.3 C2M.CCB.Manage Deposit
Sibling Processes: 3.3.3.3 C2M.CCB.Review Deposits, 3.3.3.4 C2M.CCB.Monitor Deposits - Calculate Interest, 4.2.2.6 C2M.CCB.Manage Deposit Charges, 3.3.2.1 C2M.CCB.Start Premise Based Service

It is a common practice for utilities to request Cash and/or Non-Cash Deposits when they are establishing service for the customers. Different types of customers may have different deposit rules and criteria. The process below describes the steps taken to determine the appropriate deposit conditions and how to establish a Deposit SA for a Customer. To assist in the setting up of deposit functionality a summary of details for [Algorithms to Configure](#) and [Entities to Configure](#) are attached.

Business Process Model



Detail Business Process Model Description

1.1 Analyze Customer and Account and Determine if Deposit is Needed

Actor/Role: CSR

Description:

The organization decides what type of Deposit (Cash or Non-Cash) may be required as a condition for providing service to a Customer or to a specific group of Customers. The process will be initiated as a part of the Start Service process or as a result of the Deposit Review process (See 3.3.3.3 C2M.CCB.Review Deposits for details). Regardless of the nature of the Deposit request, the CSR or Financial Analyst analyzes the customer's Credit History, External Credit score, and Account Information to determine if a Deposit is required for the given Customer and his Account. Sometimes the Account already has one or more Cash or Non-Cash Deposits. The CSR also reviews existing Deposits, using the Deposit Review or the organization can create an alternative Deposit Review Portal to understand if a new Deposit is needed or the existing Deposit can be used to satisfy new requirements (e.g. Deposit Class is the same, but amount must be different)

Note: The application allows multiple Deposits for the same Account.

1.2 Make Changes in Existing Deposit SA

Actor/Role: CSR

Description:

The CSR makes appropriate changes to the existing Deposit if the existing Deposit (Cash or Non-Cash) can be used to fit Deposit requirements. The CSR uses either the [Account-Deposit page](#) for Non-Cash/Third Party Deposits or [Deposit SA](#) page for Cash Deposits respectively for this purpose.

1.3 Update Existing Deposit

Actor/Role: C2M (CCB)

Description:

The existing Deposit is updated in the application.

1.4 Determine The Type Of Deposit Required

Actor/Role: CSR

Description:

The CSR determines the Deposit Type appropriate for the Customer / Account. The choices when applying a deposit are Cash Deposit (request payment of deposit), Non-cash deposit (Accept another security type as deposit), or Third Party Deposit (Accept deposit security from another Service Agreement).

Configuration required Y

Entities to Configure:

Deposit Class
SA Type
SA Type Start Options
Non-Cash Deposit Type

Note: all the appropriate algorithms that will determine Deposit SA behavior should be taken into consideration and configured when Entities above are configured

1.5 Initiate Request to Start a Deposit SA

Actor/Role: CSR

Description:

This step is executed only if the CSR wishes to establish a Cash Deposit for the Customer. It initiates standard SA creation process using [Start/Stop page](#) functionality.

1.6 Calculate Recommended Deposit Amount

Actor/Role: C2M (CCB)

Description:

The CSR can request an automated recommended Deposit Amount and display the result.

Process Plug-in enabled Y

Available Algorithm(s):

DEPRECOM-BA - This Deposit Class - Deposit Recommendation Algorithm Type calculates the amount as the Average bill from previous number of months - times a set %
DEPRECOM-MBA - This Deposit Class - Deposit Recommendation Algorithm Type calculates the amount as the Maximum bill from previous number of months - times a set %
DEPRECOM-GSP - This Deposit Class - Deposit Recommendation Algorithm Type provides a Deposit recommendation for gas service providers in a very specific way
DEPRECOM-MBT - This Deposit Class - Deposit Recommendation Algorithm Type calculates the amount as the Average bill from previous number of months - times a set % and produces a To Do if outside a set tolerance %

Configuration required Y

Entities to Configure:

Algorithm
Deposit Class
SA Type
To Do Type
To Do Role

1.7 Determine Deposit Amount

Actor/Role: CSR

Description:

The CSR can provide their own or overwrite System calculated recommended Deposit Amount and populate any other amount required by the business rules.

1.8 Select Deposit Billing Options

Actor/Role: CSR

Description:

There are two billing options available for selection. The CSR can choose to bill the Deposit only once - Total Deposit Amount in one bill, or, bill the Deposit in installments. If CSR selects installment option, he/she needs to populate the Installment Amount (if it hasn't been pre-populated by system).

Configuration required Y **Entities to Configure:**

SA Type
SA Type Start Option

Note: This configuration is needed to pre-populate the Installment amount

1.9 Create Deposit SA in Pending Start Status and Create Alert

Actor/Role: C2M (CCB)

Description:

The application creates the Deposit SA in Pending Start Status and automatically creates and displays a Dashboard Alert when a Deposit exists for the Customer's Account. See 3.3.2.1 C2M.CCB.Start Premise-Based Service for further detailed information.

2.0 Request Activate SA

Actor/Role: CSR

Description:

The CSR manually activates the Pending Start SA. See 3.3.2.1 C2M.CCB.Start Premise-Based Service for further detailed information.

2.1 Activate Deposit SA

Actor/Role: CSR /C2M (CCB)

Description:

A Deposit SA previously created in Pending Start Status could be activated manually by the CSR or automatically.

Automated Process: A background process (SAACT) will activate A Deposit SA automatically on the date indicated as a Start Date.

Manual Process: CSR can activate a Deposit SA at any time based on business needs, taking into consideration the Deposit SA Start Date. The CSR can change the Start Date if required.

Refer to 3.3.2.1 C2M.CCB.Start Premise-Based Service for further detailed information.

2.2 Select Non-Cash Deposit Type

Actor/Role: CSR

Description:

This step is executed if the CSR creates a Non-Cash Deposit (e.g. letters of credit, surety bonds). The appropriate Non-Cash Deposit Type is selected for the Account. The [Account-Deposit page](#) is used to manage Non-Cash and Third Party deposits.

Configuration required Y **Entities to Configure:**

2.3 Check if Third Party Account has Cash Deposit

Actor/Role: CSR

Description:

This step is executed only if a Third Party Deposit is required. The CSR checks if a Third Party's Account has Cash Deposit and evaluates if the existing Third Party Cash Deposit can be used. If the existing Third Party Cash Deposit can be used for a Third Party non-cash deposit, CSR will proceed with populating the link to the Third Party Cash Deposit SA (if required) and non-cash Third Party Deposit information in the Account-Deposit.

Note: The application allows the sum of all the Third party Non-Cash Deposits to exceed the referenced Total Deposit Amount of Third Party Cash Deposit.

2.4 Select Third-Party Deposit Type

Actor/Role: CSR

Description:

This step is executed if the CSR creates a Third-Party Deposit. For Third Party Deposits a Non-Cash Deposit Type of "3rd Party Deposit" is selected. The [Account-Deposit page](#) is used to manage Non-Cash and Third Party deposits.

Configuration required Y **Entities to Configure:**

2.5 Populate Information

Actor/Role: CSR

Description:

The appropriate details for the Non-Cash (Deposit Class, Deposit Amount, Document Number and comment) or a Third Party (Deposit Class, Deposit Amount, Document Number, Third Party Deposit SA and comment) Deposit Type is populated for the Account. Note that for Third-Party Deposits, a link to the Third Party Deposit SA is required. The [Account-Deposit page](#) is used to enter this information.

Configuration required Y

Entities to Configure:

Deposit Class

2.6 Update Account-Deposit

Actor/Role: C2M (CCB)

Description:

New Non-Cash Deposit (e.g. Surety Bonds, Letters of Credit, Third Party Deposit) is added to the Account-Deposit in the application.

2.7 Request Add Customer Contact

Actor/Role: CSR

Description:

Based on established business rules the CSR or Authorized User creates a Customer Contact for the customer, recording pertinent information about the Deposit.

Configuration required Y

Entities to Configure:

Customer Contact Class
Customer Contact Type

2.8 Create Customer Contact

Actor/Role: C2M(CCB)

Description:

Manual Process: A CSR can manually add a customer contact which can generate a letter to the contact person when a Non Cash or Third-Party Deposit is added.

Automated Process: The application can be configured to automatically generate a letter to the contact person when a Cash Deposit SA is activated.

Process Plug-in enabled Y	Available Algorithm(s):	<p>SAAT-CC - This SA Activation Algorithm Type creates a customer contact of the specified Customer Contact Class and Customer Contact Type when the service agreement is activated</p> <p>C1-LTEX-COL - This Letter Template Extract Algorithm constructs the extract records that contain the information that appears on letters created as a result of collection events.</p>
Configuration Required Y	Entities to Configure:	<p>Letter Template</p> <p>Customer Contact Class</p> <p>Customer Contact Type</p> <p>SA Type</p>
Customizable process N	Process Name:	LTRPRT

2.9 Manage Customer Contact

Actor/Role: C2M(CCB)

Description:

CC&B generates a letter to be sent to the customer. Refer to 3.4.1.1 C2M.CCB.Manage Customer Contact for details.

Test Documentation related to the Current Process

ID	Document Name	Test Type

Document Control

Change Record

Date	Author	Version	Change Reference
03-01-09	Galina Polonsky	Draft 1a	No Previous Document
05-27-10	Geir Hedman		2.3 new features using the Deposit Review Portal to review deposits and add a customer contact
10-20-10	Geir Hedman		Update Title and Content page
2/8/11	Geir Hedman		Updated Document and Visio
4/15/13	May Wang	V2.4	Updated Document and Visio
9/9/13	Mel Bachmeier	V2.4	Updated Document and Visio
9/21/13	Galina Polonsky		Reviewed, Approved
07/29/2017	Phillip Martin		C2M version created
09/15/2017	Ekta Dua		Updated Document and Visio
09/21/2017	Galina Polonsky		Reviewed, Approved
05/29/2019	Satya Kalavala		Updated Format for v2.7

Attachments:

Start/Stop Page



Start Stop Page.doc

Account-Deposit Page



Account-Deposit
page.doc

Deposit SA page



Deposit SA page.doc

Algorithms to Configure



Deposit Config -
Algorithms.doc

Entities to Configure:



Deposit Config -
Entities.doc